

ALPHA-BRUSH PROFILE LS-TS

Details and Benefits

STILES | HC

YOUR SOLUTION

ALPHA-BRUSH PROFILE LS-TS



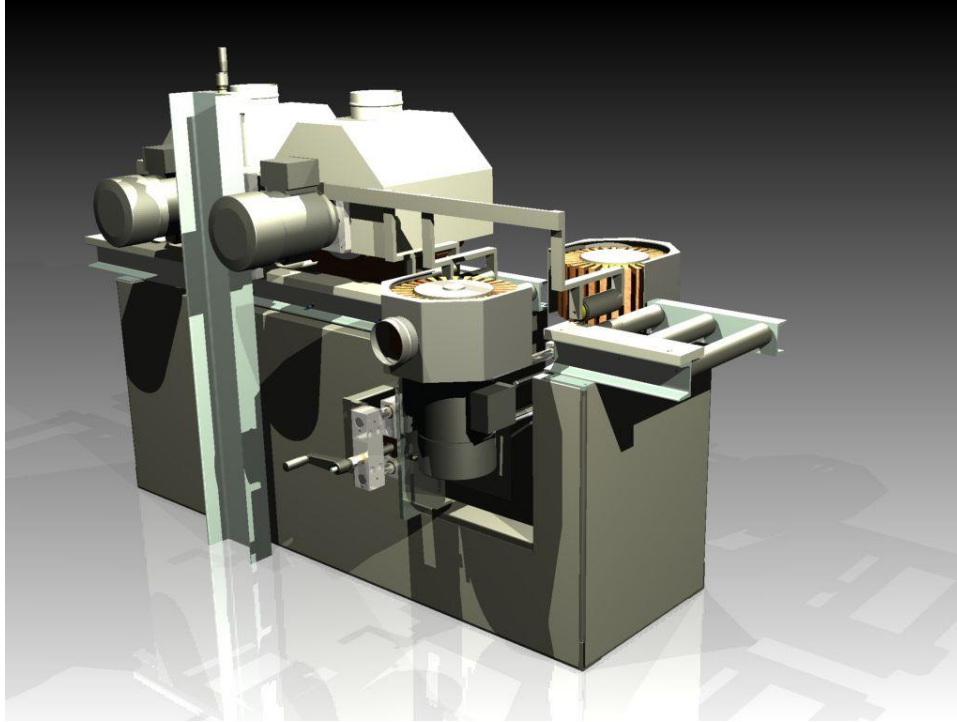
BASIC SPECIFICATIONS

- Sanding Width: 12" (300mm)
- Sanding Thickness: 0-100mm (4")
- Station 1: Double Barrel Brushes
 - Head 1: 300mm Barrel Brush
 - Head 2: 300mm Barrel Brush
 - Height adjustable as a group
- Station 2: L&R Side Barrel Brushes
 - Head 3: L 300mm Barrel Brush
 - Head 4: R 300mm Barrel Brush
 - L Side adjustable
- Variable Speed and Direction on all Heads
- Push Button Control
- Driven Rollers with Variable Speed Control
- Fixed Passline Height (35")

APPLICATIONS

- Denibbing
- Whitewood Surface Preparation
- Sealer & Intermediate Sanding

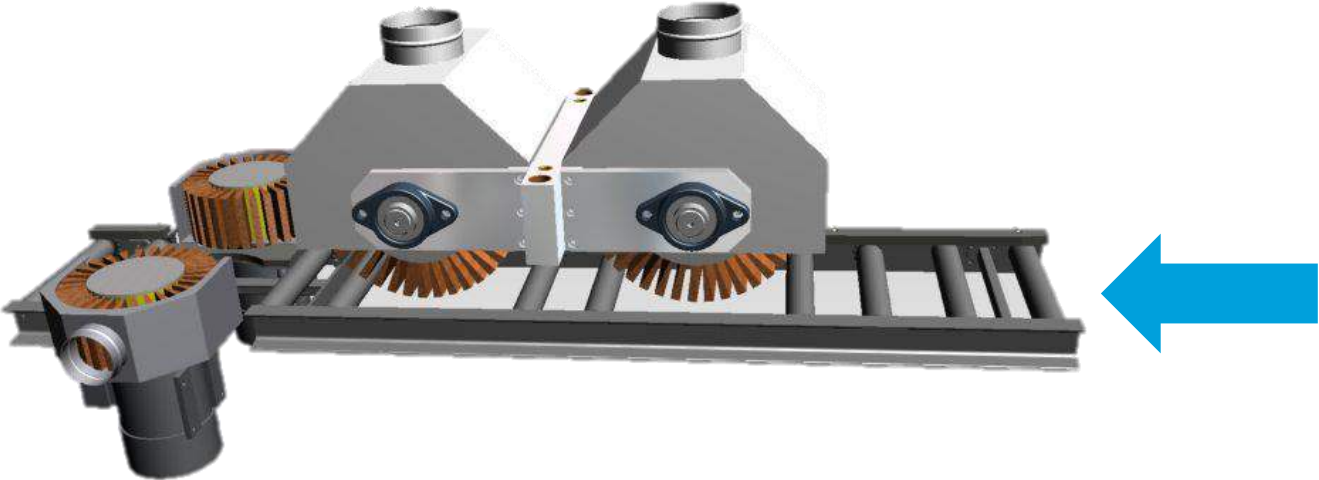
STABLE MACHINE FRAME & CONSTRUCTION



DETAILS

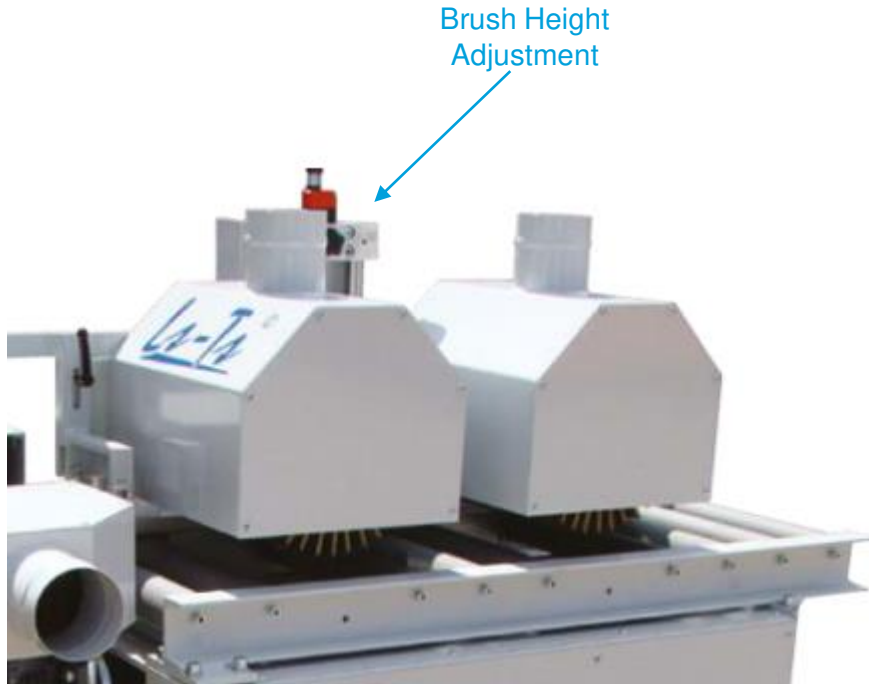
- **Stable & Clean Machine Construction**
 - Heavy welded frame for longevity and stability
 - Easy access for service and adjustments
 - Integrated electrical panel for clean and neat appearance
- **Machine weight**
 - LS-TS: ~1,450 lbs

SANDING HEAD CONFIGURATION



Internal use only

STATION 1: DOUBLE BARREL BRUSHES



DETAILS

- **Double Barrel Brush Sanding Station**
 - 2 Barrel Brushes
 - 300mm Diameter
 - 1.1kw (1.5HP) Per Brush
 - Variable Speed & Direction
 - Variable Brush RPM
 - Bi-Directional
 - Double Side Strips Possible (sealer / whitewood)
- **Manual Height Adjustment**
 - Brush Projection Set via overall station height
 - Both top brushes adjust together
 - Mechanical digital readout for position
- **Hold Down Rollers**
 - For workpiece hold down
 - Manual adjustment for projection

STATION 2: L&R SIDE BARREL BRUSHES

DETAILS



Position Adjustment

- **L&R Side Barrel Brush Sanding Station**
 - 2 Barrel Brushes
 - 300mm Diameter
 - 1.1kw (1.5HP) Per Brush
 - Variable Speed & Direction
 - Variable Brush RPM
 - Bi-Directional
 - Double Side Strips Possible (sealer / whitewood)
- **Left and Right Hand Adjustable Position**
 - Head can swivel and adjust up and down manually
 - Swiveling in negative direction (under conveyor)
 - Head can move in and out via hand crank
 - Mechanical digital readout for position
- **Hold Down Rollers**
 - For workpiece hold down
 - Manual adjustment for projection

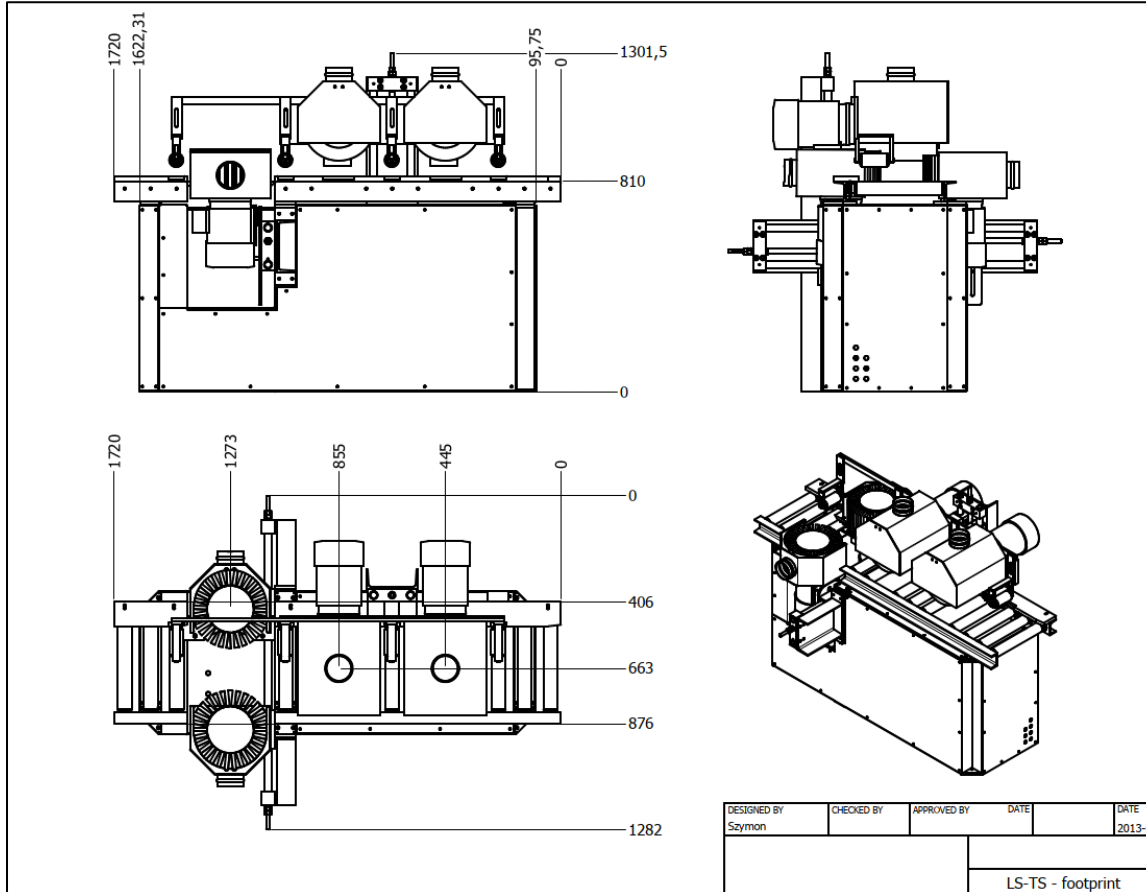
PUSH BUTTON CONTROLS



DETAILS

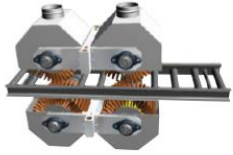
- **Simple and Easy Operation**
 - **Push buttons for head on/off**
 - **Adjustment knob for RPM**
 - **Emergency Stop on control panel**
 - **Main Switch for lockout / tagout**

MACHINE FOOTPRINT

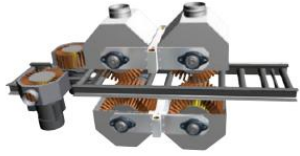


Internal use only

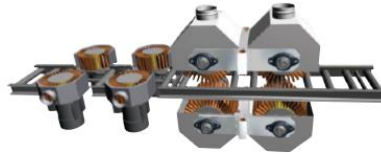
ADDITIONAL OPTIONS & POSSIBILITIES



LS-TB



LS-TSB



LS-TSSB



OPTIONS

- Various configurations possible based on application
- Separate height adjustment per brush
- Larger motors possible for texturing

VICTORY SERIES

- Additional Features Possible
- Fully Customizable
- Touchscreen controls possible
- NC positioning possible
- Full machine enclosure
- High speeds possible
- Discs and barrel brushes possible

Stiles Machinery
3965 44th St. SE
Grand Rapids, MI 49512

www.stilesmachinery.com

STILES | HC

YOUR SOLUTION