

N**ORTHTECH**

Machine, LLC

NT-DTM480 Semi Automatic Dovetailer



102 Walnut Street
Borden, IN 47106
(812) 967-7400 Fax (812) 967-7401
www.northtechmachine.com info@northtechmachine.com

NORTHTECH

Machine, LLC

NT-DTM480 Semi Automatic Dovetailer

- 21,500RPM 2HP single spindle dovetailer
- 3 cycle speed selection for fine tuning of any product
- (4) individually operated pneumatic clamps
- Quick return button allows for the immediate return of the head without limit switch on rear on machine for varying width parts
- Dual work stations for 2X production of matched sets
- Massive 1,000lb construction ensures maximum durability and vibration free cutting performance.



NORTHTECH

Machine, LLC

SPECIFICATIONS:

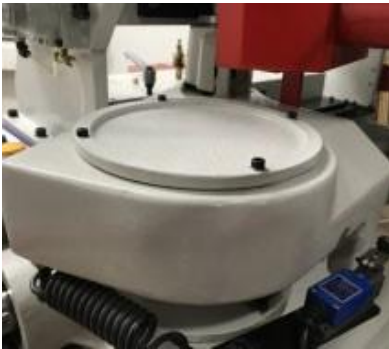
MODEL	NT-DTM480
Thickness of material	7 ~ 60mm (5/16" - 2.25")
Height of tenon	6 ~ 18mm (1/4" - 11/16")
Depth of mortise	10 ~ 25mm (3/8" - 1")
Cutter spindle vertical adjustment	30mm (1-1/8")
Maximum workpiece size	(L) 1500mm x (W) 480mm (59" x 19")
Workpiece clamping cylinders	4pcs
Spindle speed	21,500 RPM
Spindle motor	2HP
Dust hood outlet	100mm (4")
Machine dimensions (L x W x H)	53" x 34" x 48"
Packing dimensions (L x W x H)	60" x 40" x 57"
Net weight	1,012lbs
Gross weight	1,276lbs

** Specifications subject to change without notice*

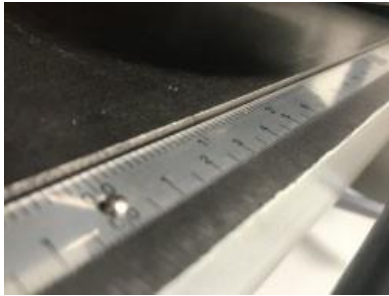
Machine Features



- Employs a special collet chuck for absolute centric clamping of the dovetail shank.



- The side mounted transmission belt provides ease of access for belt replacement.

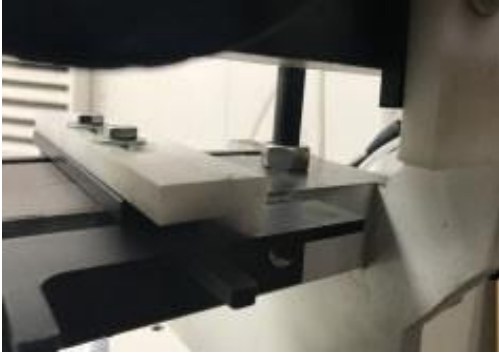


- Dovetail height and depth are quickly adjustable.

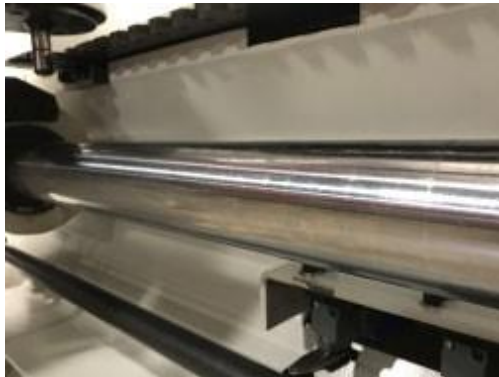


- The male & female dovetail joint height and depth are easily adjusted.
- Each with individual scales for accurately indicating adjustment amount.

Machine Features



- Dual UHMW chip breaker fences provide accurate part placement, with rapid chip breaker adjustment to eliminate blow out.



- Precision rod slides provides years of maintenance free operation.

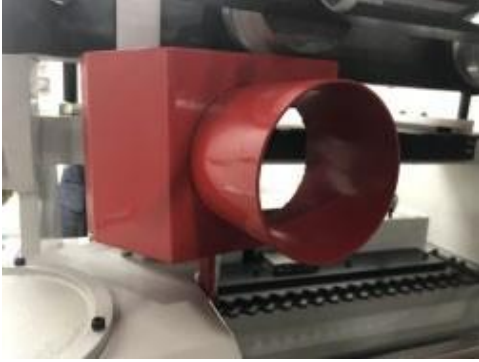


- Air clamps with elongated grips fully ensure parts are firmly held thus providing vibration free milling of dovetail tenons and box joints.
- Simple operator station just to the side of work area for quick access.



- Electrical components are UL & CE approved and neatly arranged in a dust proof cabinet.

Machine Features



- Dust hood provides a comprehensive guard for the cutting area as well as the critical extraction of the wood chips and fine dust.
 - This helps safety, shop cleanliness, and improves tool life.
-



- Works on plywoods and melamine board without tearing or fuzzing.