

NORTHTECH

Machine, LLC

NT-iGlue450 Automatic Dovetail Glue Applicator



**No Required Setup
No Wasted Glue
No Mess**

"Just Stick It In"



102 Walnut Street
Borden, IN 47106
(812) 967-7400 Fax (812) 967-7401
www.NorthtechMachine.com info@NorthtechMachine.com

NORTHTECH

Machine, LLC

NT-iGlue450

- Automatic dovetail glue application machine
- No setup required between different dovetail designs
- No setup required between part sizes
- No mess due to inconsistent glue application
- Simply place the parts against the fence and the iGlue will scan, apply glue to either male or female side of the joint automatically, all with in seconds
- No mess due to inconsistent glue application
- Working width: 25.4 - 450mm (1" - 18")
- Working thickness: 6 - 50mm (1/4" - 2")
- Working length minimum: 100mm (4")
- (3) Programmable quick change working speeds
- Maximum operating speed: 1.4in/s
- Siko counter fence for 0-2" depth setting
- Removable glue catch basin
- Replaceable no drip glue nozzle
- Glue pot and water pot on an internal cart system that pulls outside the machine for easy access
- LED illuminated working area changes color based on work mode
- Automatic sleep mode will place the nozzle into a water bath after a few minutes without use to keep glue tip fresh
- Auto cleaning mode flushes glue out of system easily
- Single pneumatic connection with FLR included
- Easy smartphone integration for detailed parameter adjustments and maintenance
- Glue reservoir: 10L Adjustable pressure glue pot included
- Water reservoir: 4L Adjustable pressure water pot included
- Recommended glue type: Water soluble PVA glue 8,000mpa s @ 60-80°
- Machine / Shipping weight: 300lbs / 412lbs
- Machine / Shipping dimensions (LxWxH): 38" x 20" x 44" / 42" x 21" x 49"
- 230V/460V 3PH 60HZ; 200W; 1Amp or 220V 1PH 60HZ; 2 Amp
- Tool box and manual included
- Standard Northtech one year parts warranty
- Northtech offers a full line of dust collectors and flexible dust hose for any application.
- All machines are tested at our corporate headquarters in Indiana prior to shipment providing trouble free start up.



Machine Features



- Servo powered head positioning.



- 450mm (18") working width.



- Simple control station.
- Raised emergency stop, volume control, mortise or tenon application, selection, and one touch wake up.



- 10L(2.6gal) glue pot and optional 4L(1gal) water pot stored inside machine for compact footprint and clean look.
- Both pots are on a cart that rolls out the front of the machine for easy fill ups.

NORTHTECH
Machine, LLC

www.NorthtechMachine.com

Machine Features



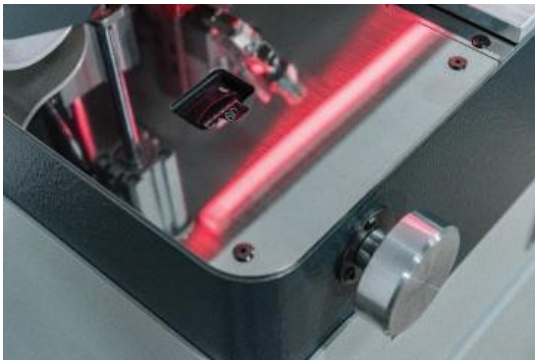
- Northtech proprietary no drip glue head provides a mess free operation.



- Precision timing belt mated with servo positioning helps provide the exacting glue placement.



- The iGlue will illuminate red when emergency stop is pressed.

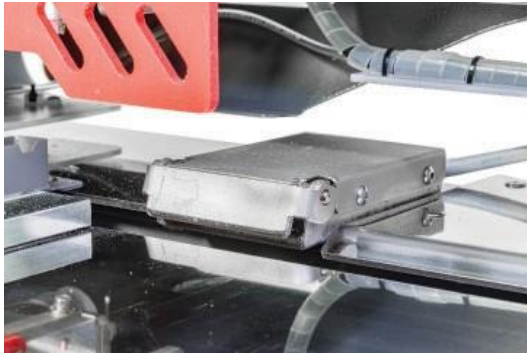


- Board depth placement control via front mounted siko positioning with mechanical readout.

Machine Features



- iGlue will automatically enter a sleep mode after a period of non use and changes colors to notify operator.
- During sleep mode the iGlue will submerge the glue nozzle into a water bath to prevent glue build up.
- Press the one touch wake up button and machine is prepared for operation mode.



- Rear mounted pressure plate detects part into and initiates cycle automatically.



- Optical sensors mounted directly in front of the glue nozzle for immediate identification and glue placement, for the industry's fastest glue application.
- Part hold down uses minimum pressure for added safety.

NORTHTECH

Machine, LLC



NORTHTECH
Machine, LLC

www.NorthtechMachine.com