

SNX nVision System1 G3 Edgebander Quotation

Date Prepared: February 25, 2021

INNOVATION TO OUTPERFORM



The SNX nVision System1 G3 (Generation 3) series of US-made hot melt contour edgebanders offers any woodworking shop an easy, affordable, and versatile shaped part banding solution. It allows shops to bring contour banding production in-house by being more cost-effective than outsourcing. The wood industry is moving to provide its customers with more and more complex shaped parts in their projects and the nVision allows your company to respond in a faster, more efficient way than ever possible.

Woodworking Markets nVision Serves:

Closets Commercial Furniture Store Fixtures/Display Cabinetry

nVision Edgebander Customers:



#1
Best-Selling
Semi-Auto
Contour Bander
in North America

Many of the most prestigious firms have already switched to using nVision semiautomatic Contour Edgebanders. nVisions are now the *best-selling contour banders* in North America! We hope you will decide to join them, and us, with an nVision System1 G3 machine.

nVision System1 - Features

MAIN MACHINE BENEFITS:

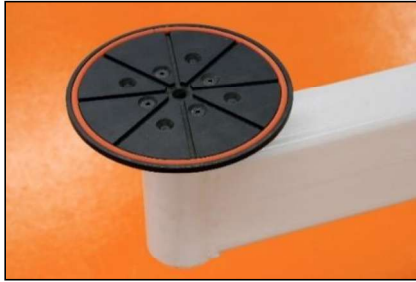
- ▶ 100% US designed, built & supported – **faster parts and service response, lower shipping costs**
- ▶ UL-certified electrical cabinet – **fully-compliant with codes**
- ▶ Heavy-duty machined frame – **added stability absorbs vibrations that could affect banding quality**
- ▶ Large touch-screen graphical PLC controller – **less need for special training or language translation to operate machine**
- ▶ Articulated vacuum pod arm supports parts - **maximum panel weight = 230lbs!**
- ▶ Machine can band and trim parts up to 10' in size! – **ideal for closet parts, lockers**
- ▶ Machine designed to apply hot melt EVA (Ethylene Vinyl Acetate) adhesive on 0.5, 1, 2, and 3mm tape – **can also band some wood veneers & special tapes**
- ▶ All machine drive systems (spindles, rollers) powered by an up-sized Baldor motor – **quiet, reliable power**
- ▶ Spindle drive system uses SNX Armordrive serpentine Kevlar belt – **smoother, quieter, longer life operation without the need for lubrication**
- ▶ Triax 3-axis laser system (patent pending) ensures consistently tighter butt joints on panels – **for better looking products, consistent performance.**
- ▶ Incredibly tight inner and outer radius bands – **can out-band more expensive CNC machines!**
- ▶ Glue pot holds 1kg of adhesive, machine has hopper with laser-guided auto-filling of the glue pot – **never run out of glue again**
- ▶ Trimming unit trims top and bottom tape overhang of finished bands using same vacuum arm; trim station retracts pneumatically to allow swings of large parts during banding process

DIGITAL PLC TOUCH-SCREEN MACHINE CONTROL



- ▶ **Touch “Auto”** = Triax 3-axis laser system is **on** to follow part geometry
- ▶ **Touch “Manual”** = Triax laser system is **off** for perimeter distance banding
- ▶ Colorful graphic interface makes operation and programming easier
- ▶ Temperature interlock prevents drive system start-up until the proper operating temperature is reached
- ▶ Precision +/- adjustment (to .1mm increments) for accurate firing/timing of the guillotine cut-off
- ▶ Ability to run MANUAL or SEMI-AUTOMATIC machine modes
- ▶ Infinitely variable electronic feed speed adjustment

VACUUM AND MECHANICAL WORKPIECE HOLDING

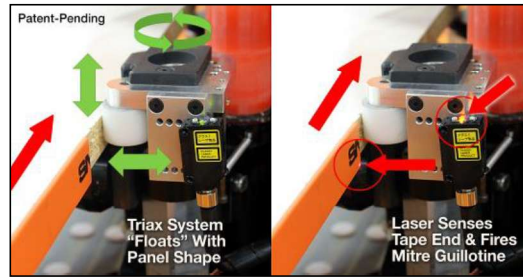


- ▶ Utilizes a pneumatic vacuum pump system (adjustable via pneumatic regulator)
- ▶ Vacuum is provided via a rotating vacuum pod table
- ▶ Additional vacuum tables are available (part specific)
- ▶ Vacuum tables have rubber gasketing to ensure adequate workpiece hold.
- ▶ Work piece feeder is driven with an EXTRA WIDE rubber roller and double upper support rollers
- ▶ Vacuum tables are at the end of a large, Heavy-Duty articulating arm.
- ▶ Dual pneumatic pinch roller drive system with quick release from panel surface.

EDGE BAND TAPE TRANSPORT AND CUTTING SYSTEMS



Tape Cutting Guillotine, Tape Infeed Guide System, Digital Encoder



“PATENTED Triax 3-Axis Laser System

- ▶ Machine comes with a universal edgeband tape coil stand.
- ▶ Automatic guillotine for making mitred cuts on 3mm edgebanding up to 60mm in height
- ▶ Guillotine activated by a digital/laser encoder system or by manual foot pedal
- ▶ Patent-pending TRIAX 3-axis laser system automatically fires the guillotine for butt joint cuts. Laser system “floats” to follow part geometry, even with warped or sagging panels

EDGE BAND GLUING STATION



- ▶ 1kg glue capacity (larger pot option available)
- ▶ Adjustable control of glue coverage
- ▶ Laser-monitored and auto-feed glue pellet hopper
- ▶ Teflon-coated glue pot for easy cleaning
- ▶ Digital glue temperature setting

TOP & BOTTOM TRIMMING STATION



Four digital readout for quick setups

- ▶ Two variable high frequency motors for edge trimming: Motor: 2 x 0.5 KW (.75 HP), 300 HZ, Speed 12000 RPM
- ▶ Maximum edge strip thickness: 3 mm (PVC)
- ▶ Maximum edge strip height: 60mm
- ▶ Manual adjustment of the trim motors for work piece thickness via hand lever.
- ▶ Pneumatic opening of the trim motors to facilitate the introduction of the panel
- ▶ (3) three stepped radius cutter heads with 1mm, 2mm and 3mm
- ▶ Four shoes come standard - 1mm, 2mm, 3mm, and a chamfer shoe
- ▶ Cyclone designed dust shrouds for excellent chip extraction
- ▶ (4) four digital readouts for fast radius and panel thickness changeovers
- ▶ Guiding and positioning of trimming function around the contour of the work piece is done manually by the operator.
- ▶ On / Off selector switch for independent use of unit

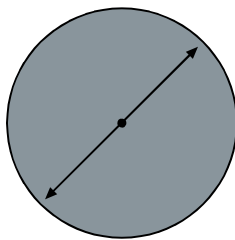
SNX nVision System1 SPECIFICATIONS

Operation Requirements:

Air Requirement: 6 bar (90 psi)
 Electrical Requirements:.....230v, 3ph, 10-amp circuit
 Dust Extraction: (1) one 3" diameter port

General Material / Edge Banding Performance:

IMPORTANT: ALL minimum & maximum radii are affected by tape thickness, quality of adhesive and edgebanding being applied.



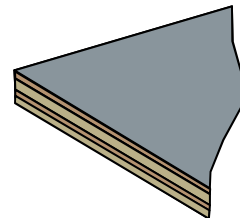
Part Size: Min. \varnothing = 150 mm, Max. \varnothing = 2400 mm



Min R = 150 mm



Edge thickness 1 mm, min = R 30 mm
 Edge thickness 2 mm, min = R 50 mm
 Edge thickness 3 mm, min = R 80 mm



Panel thickness 10-60 mm with edge thickness 1 mm
 Panel thickness 10-60 mm with edge thickness 2 mm
 Panel thickness 10-45 mm with edge thickness 3 mm



Edge thickness 0.5 mm, min = R 30 mm
 Edge thickness 1 mm, min = R 30 mm
 Edge thickness 2 mm, min = R 50 mm
 Edge thickness 3 mm, min = R 80 mm

Note: Radius size dramatically affected by adhesive temperature and quality of edge tape; semi or rigid.

NOTE: SNX nVisions are capable of smaller and tighter radius performance. This depends on specific part geometries, material sizes and other variables. Please submit part samples or electronic files to SNX so we may more accurately assess production expectations.

QUOTATION:



SNX nVision System1 SPECIFICATIONS

- ▶ Machine dimensions – SEE BELOW
- ▶ Electronic (.dxf or .dwg) files are available upon request

